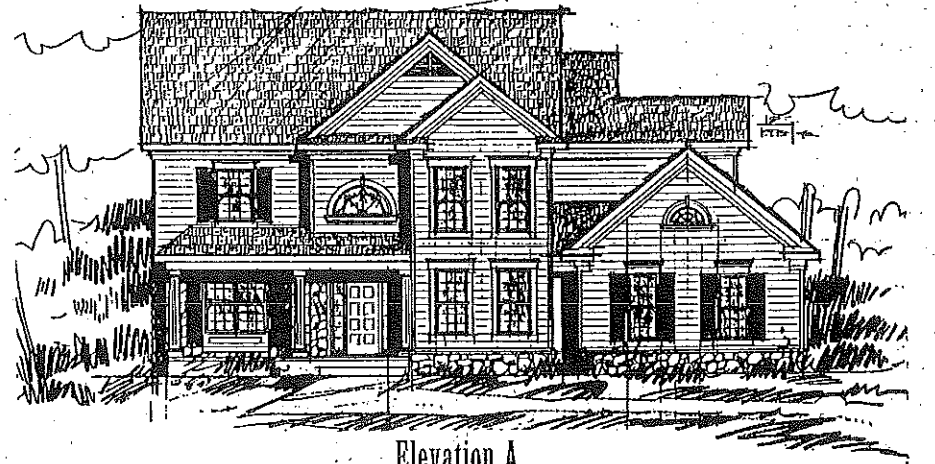
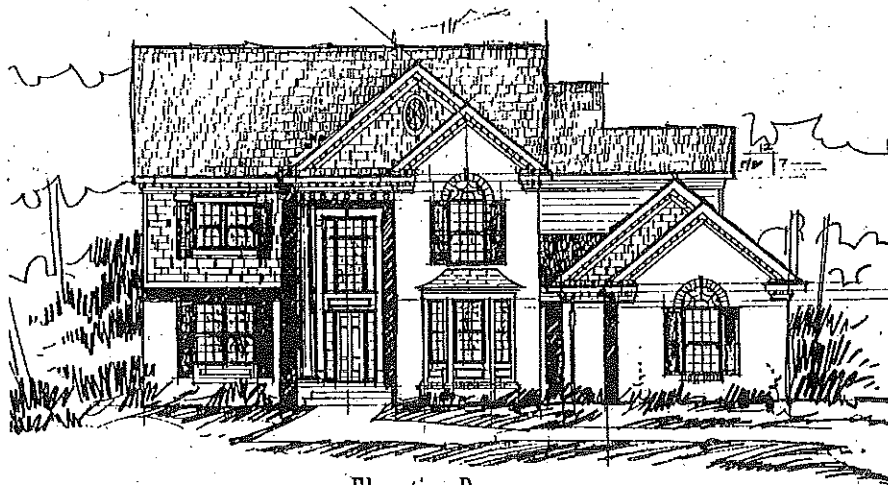


THE AMHERST



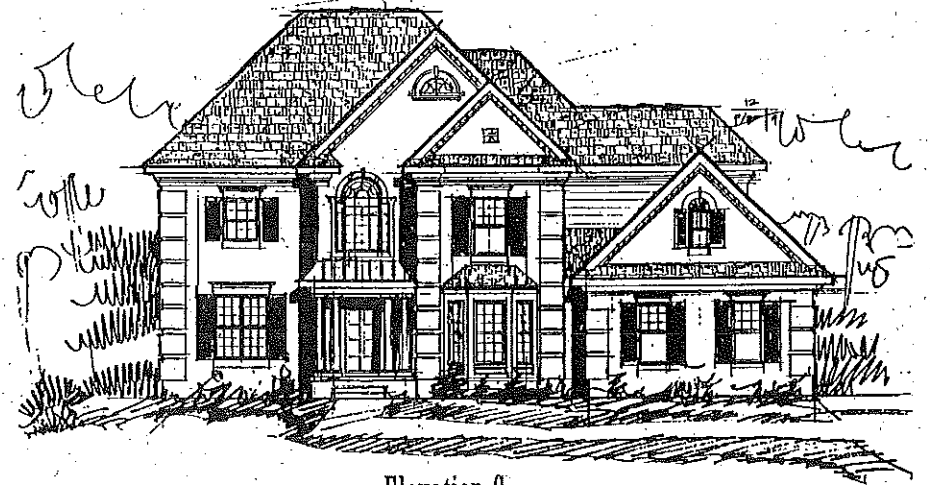
Elevation A

This colonial offers the welcome of a large covered porch with classical columns. Lap siding, shutters and stone accents complete the traditional theme.



Elevation B

This Neoclassical home features a multi-gabled roof and a two-story porch with stone surround and column detail. Brick is accented with cedar shake siding and dentil molding to add warmth to this elegant elevation.



Elevation C

Elaborate dentil moldings, shuttered windows and a Palladian window over the front entry are architectural elements typical of the Georgian style. The extensive use of brick, with quoin corners, gives this elevation a distinctive elegance.

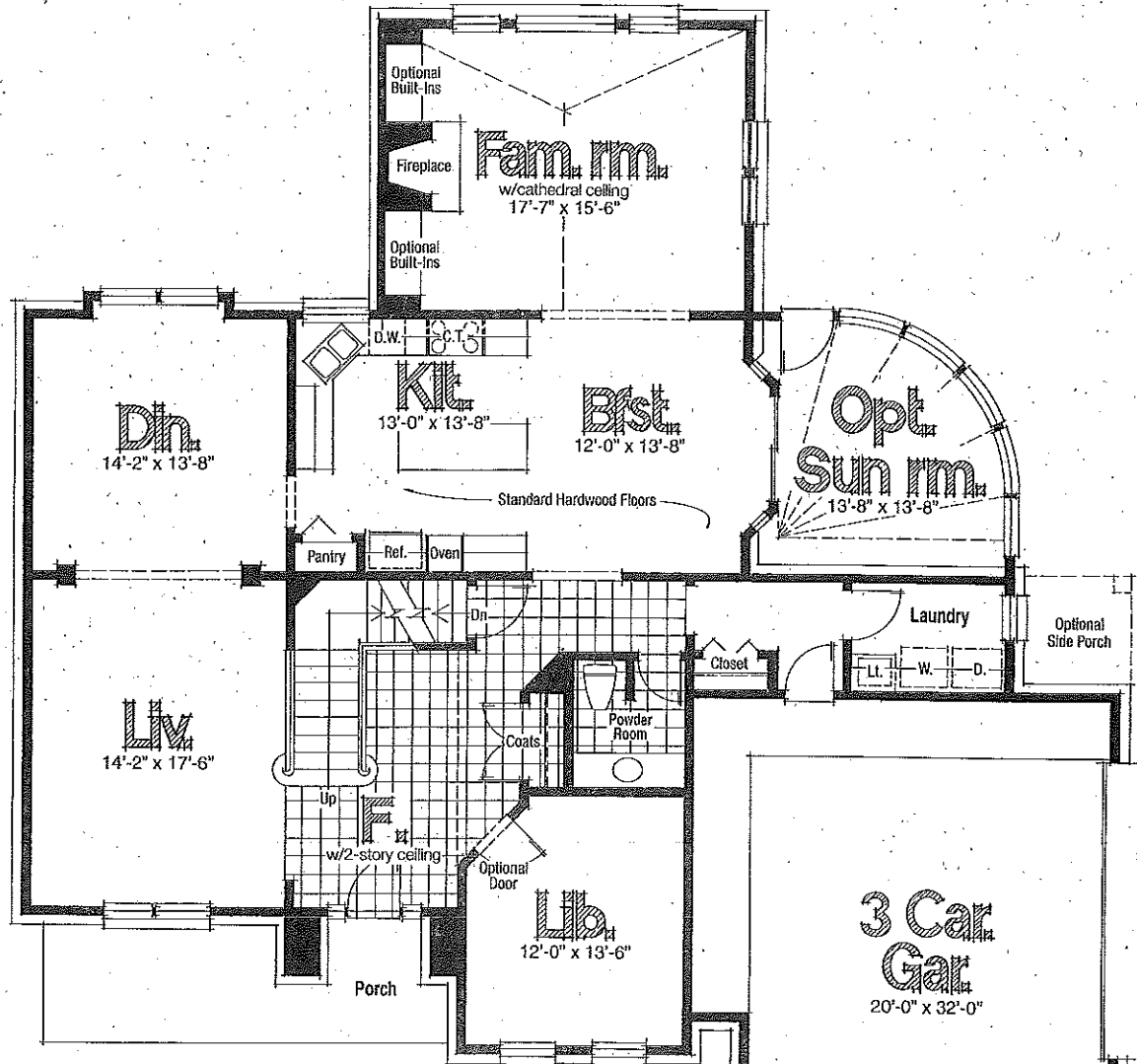
THE AMHERST

Bedrooms: 4

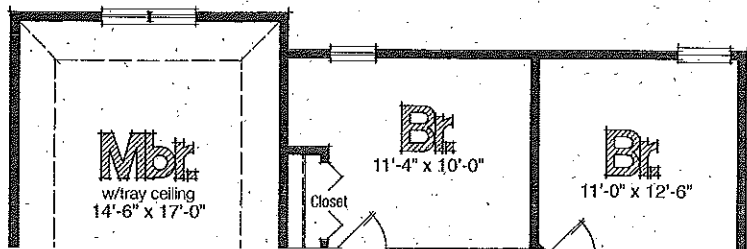
Baths: 2 1/2

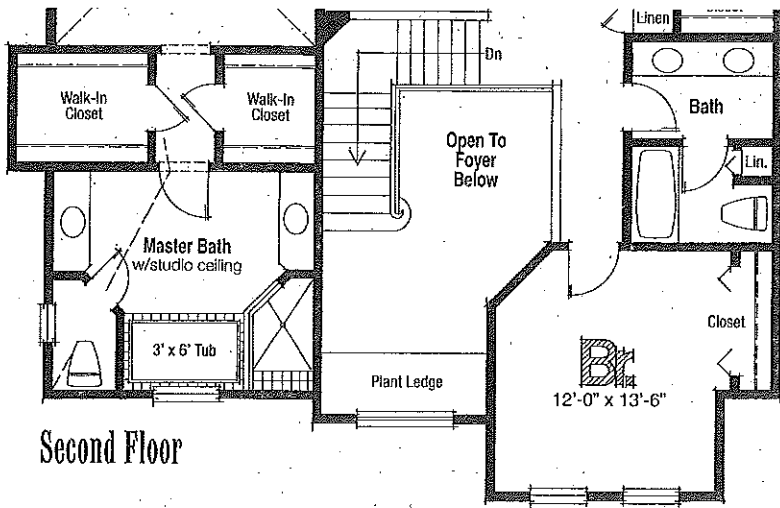
Square Footage: 3,217 - 3,562

A stunning two-story foyer with a delicately flared staircase immediately sets a dramatic tone for this home and leads the way to formal living and dining rooms distinguished by classic columns. A two-story family room with soaring cathedral ceiling and fireplace is a warm and inviting focal point. Expansive two-story walls of windows fill this informal family space with natural light. A sunroom with curved walls and a high vaulted ceiling may be added off the breakfast nook, further expanding the visual space. A covered side porch is available to provide a convenient entry into the laundry/mud room.

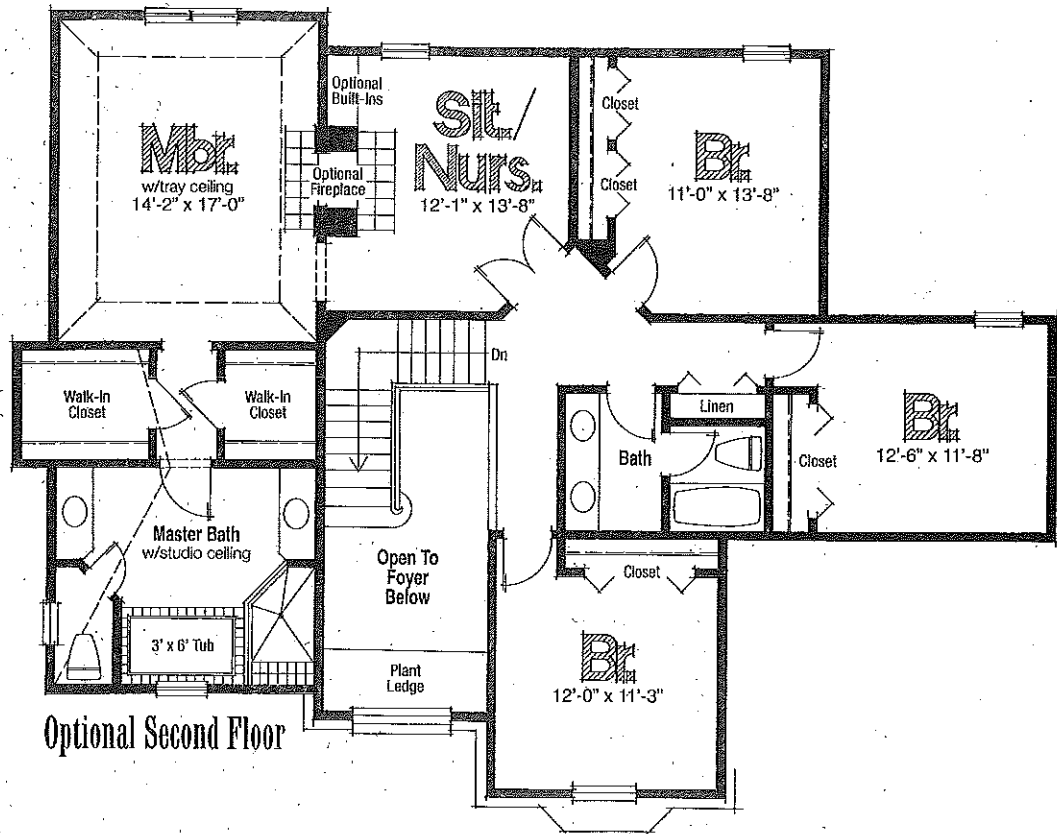


First Floor





Second Floor



Optional Second Floor

The renderings are the artist's conception. Floor plans are intended to serve as a general guide, not to accurately depict the legal description of the property's walls, boundaries, dimensions, scale of rooms or their relative locations. We cannot provide any warranties or representations that the actual and depicted description will not differ. Features subject to change without notice.

